

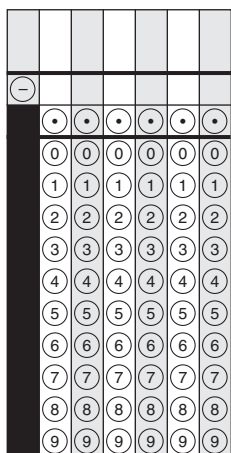




# Unit 1 (Non-Calculator)

1. (A) (B) (C) (D)

2.



3. (A) (B) (C) (D)

4. (A) (B) (C) (D) (E) (F)





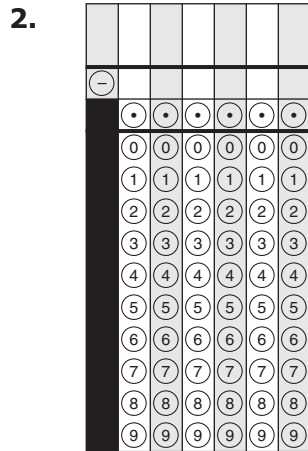
**You have come to the end of Unit 1 of the test.**

- **Review your answers from Unit 1 only.**
- **Then, close your test booklet and answer document and raise your hand to turn in your test materials.**



# Unit 2 (Calculator)

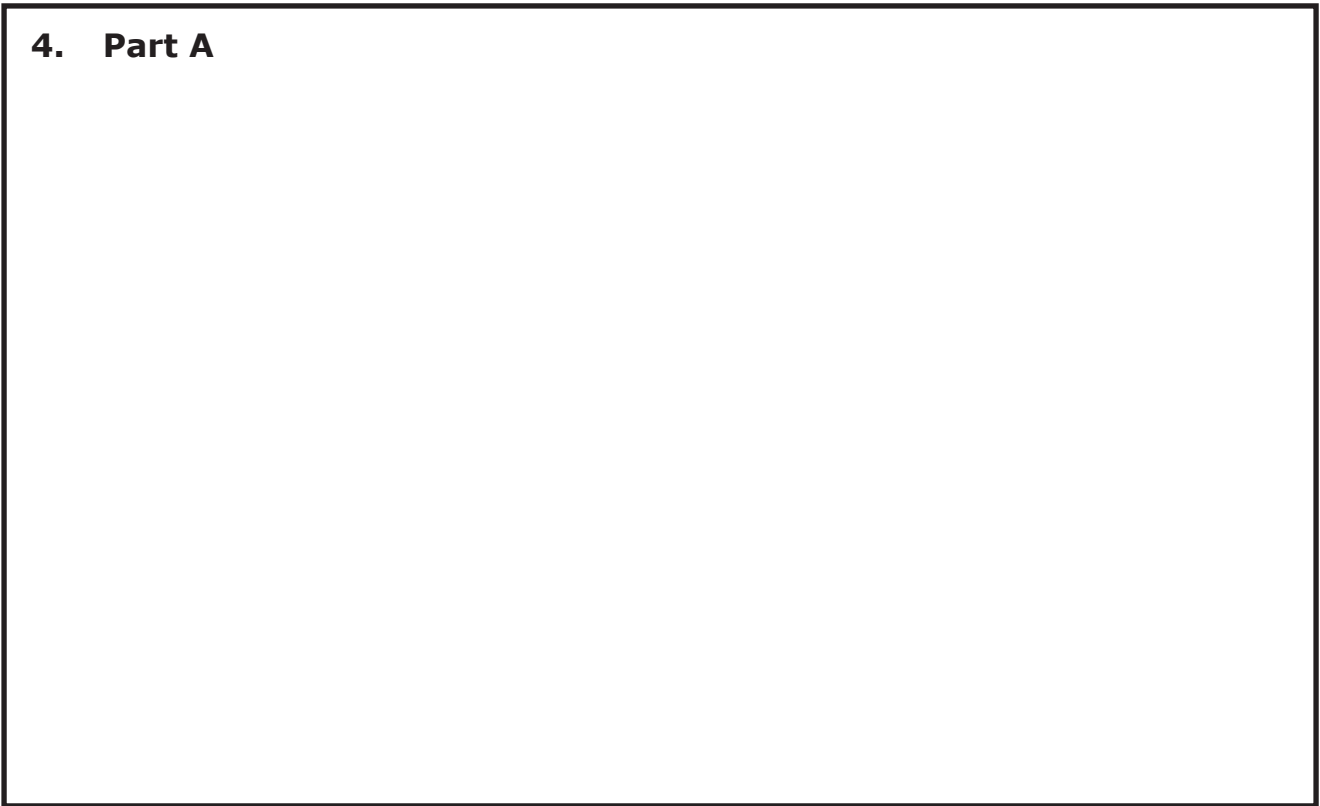
1. (A) (B) (C) (D) (E)



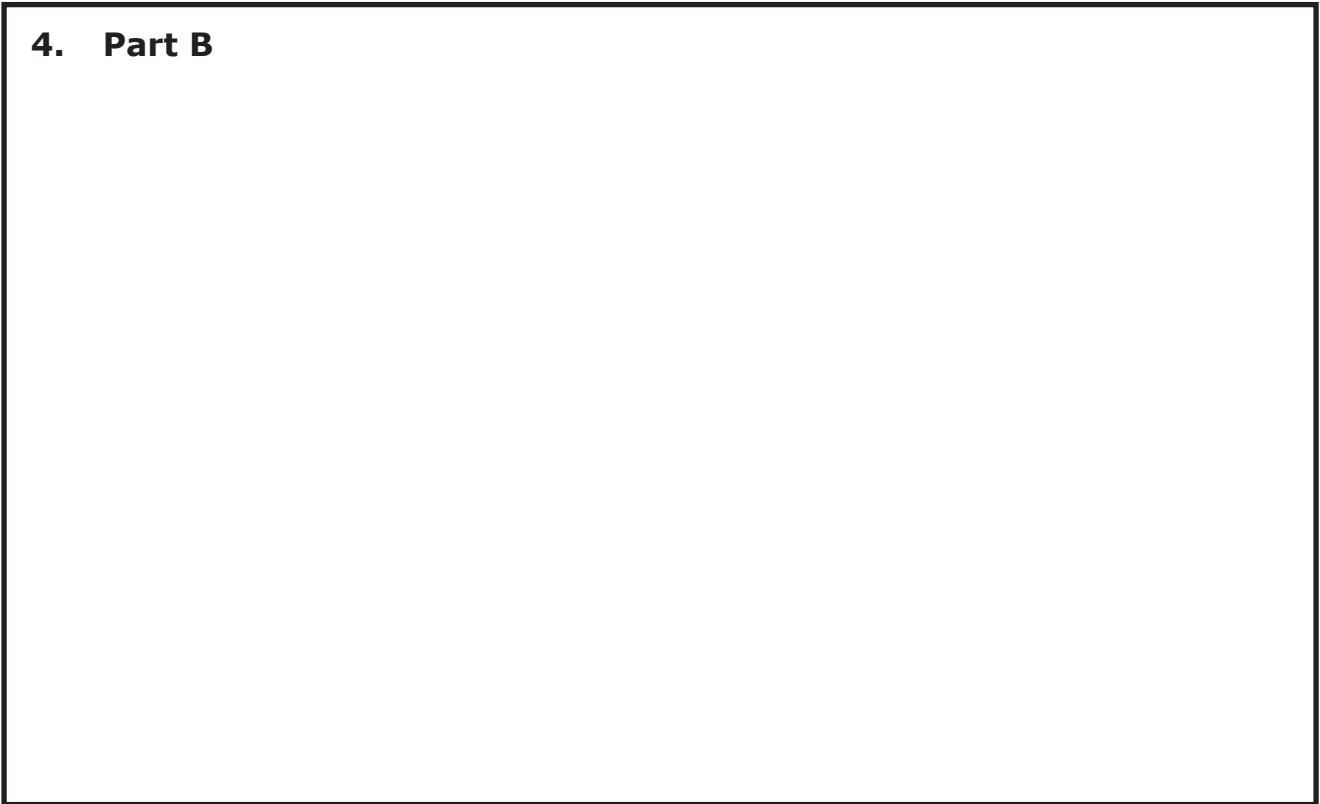
3. (A) (B) (C) (D) (E) (F)

Unit 2

**4. Part A**



**4. Part B**





**You have come to the end of Unit 2 of the test.**

- **Review your answers from Unit 2 only.**
- **Then, close your test booklet and answer document and raise your hand to turn in your test materials.**





Maryland Comprehensive  
Assessment Program

ALGEBRA I/II  
Answer Document

*Practice Test*

Secure Test Materials – Do Not Copy

This answer document is secure. It may not be copied or duplicated in any way. This answer document (used or unused) must be returned to Pearson within 5 business days of the completion of testing as directed.

