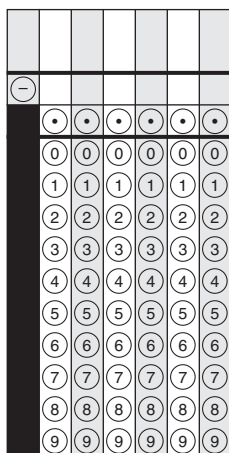


Section 1 (Non-Calculator)

1. (A) (B) (C) (D)

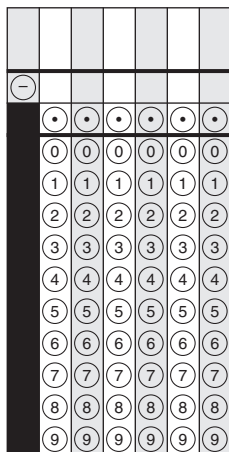
2.



3. (A) (B) (C) (D) (E)

4. (A) (B) (C) (D)

5.



6. (A) (B) (C) (D)

7. (A) (B) (C) (D)

8. (A) (B) (C) (D)

9. (A) (B) (C) (D) (E) (F)

10.

⊖					
•	•	•	•	•	•
0	0	0	0	0	0
1	1	1	1	1	1
2	2	2	2	2	2
3	3	3	3	3	3
4	4	4	4	4	4
5	5	5	5	5	5
6	6	6	6	6	6
7	7	7	7	7	7
8	8	8	8	8	8
9	9	9	9	9	9

11.

⊖					
•	•	•	•	•	•
0	0	0	0	0	0
1	1	1	1	1	1
2	2	2	2	2	2
3	3	3	3	3	3
4	4	4	4	4	4
5	5	5	5	5	5
6	6	6	6	6	6
7	7	7	7	7	7
8	8	8	8	8	8
9	9	9	9	9	9

12. (A) (B) (C) (D)





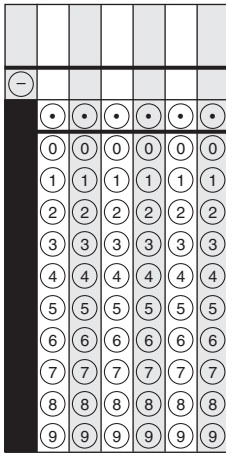
**You have come to the end of Section 1 of the test.
Review your answers from Section 1 only.**



Section 2 (Calculator)

1. (A) (B) (C) (D)

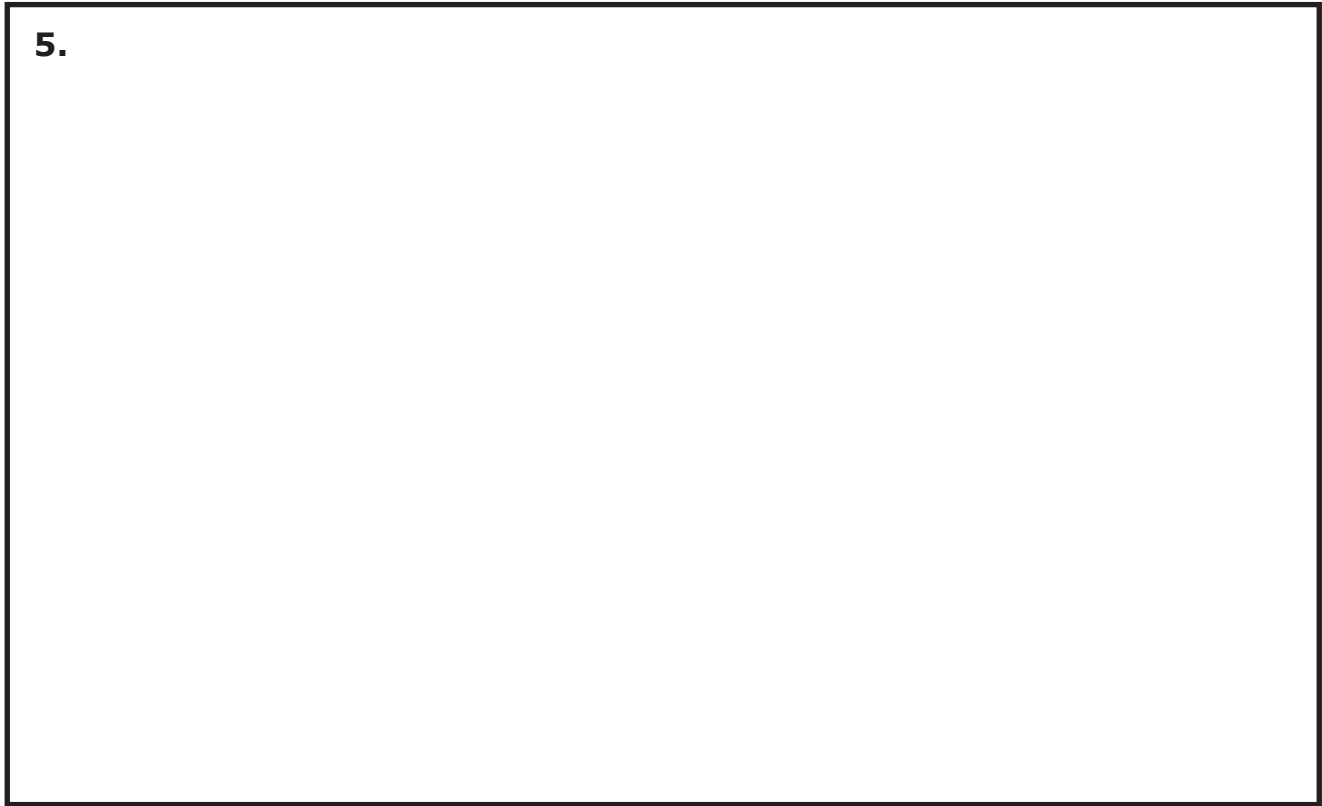
2.



3. (A) (B) (C) (D)

4. (A) (B) (C) (D) (E) (F)

5.



6. (A) (B) (C) (D)

7. (A) (B) (C) (D)

8. (A) (B) (C) (D) (E)





**You have come to the end of Section 2 of the test.
Review your answers from Section 2 only.**



Section 3 (Calculator)

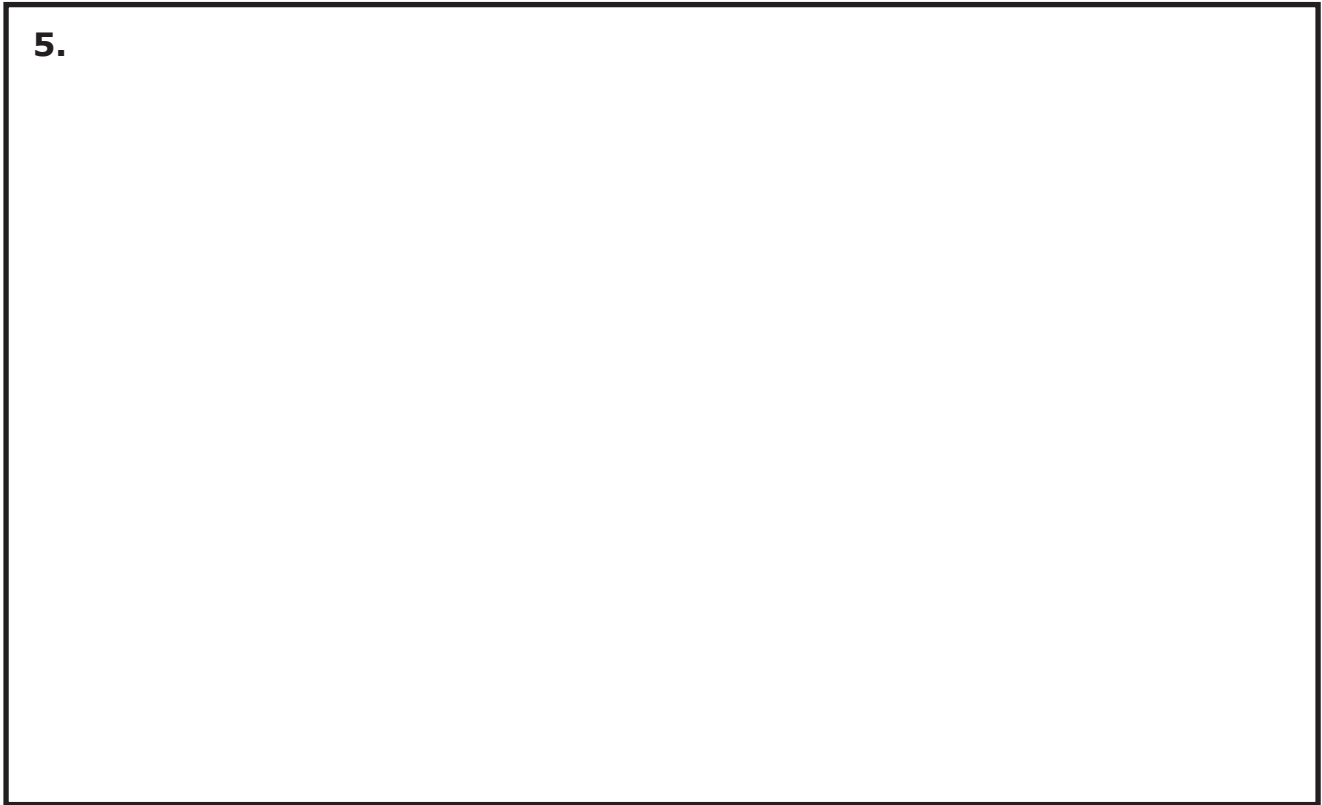
1. (A) (B) (C) (D) (E)

2. (A) (B) (C) (D)

3.

4. (A) (B) (C) (D)

5.



6. (A) (B) (C) (D) (E)

7. (A) (B) (C) (D)





**You have come to the end of Section 3 of the test.
Review your answers from Section 3 only.**



Section 4 (Calculator)

1. (A) (B) (C) (D)

2. (A) (B) (C) (D)

3.

The image shows a calculator keypad. At the top, there are six empty rectangular boxes. Below them is a row of six small circles, each containing a dot. Below that is a row of six circles, each containing a digit from 0 to 9. The keypad also includes a minus sign button on the left side of the top row of digits.

4. (A) (B) (C) (D)

Section 4

5.

6. (A) (B) (C) (D)

7. (A) (B) (C) (D)

8.

-						
•	•	•	•	•	•	•
0	0	0	0	0	0	0
1	1	1	1	1	1	1
2	2	2	2	2	2	2
3	3	3	3	3	3	3
4	4	4	4	4	4	4
5	5	5	5	5	5	5
6	6	6	6	6	6	6
7	7	7	7	7	7	7
8	8	8	8	8	8	8
9	9	9	9	9	9	9





**You have come to the end of Section 4 of the test.
Review your answers from Section 4 only.**





Maryland Comprehensive
Assessment Program

Grade 7
Mathematics
Answer Document

Practice Test

